

APPENDIX A
ACCEPTANCE LETTER – DEAT



environmental affairs

Department:
Environmental Affairs
REPUBLIC OF SOUTH AFRICA

Ref: 12/12/20/1617

Enquiries: Mr. Mogole Mphahlele

Tel: 012 310 3004 Fax: 012 320 7539 Email: m1mphahlele@deat.gov.za

Mr. Malcolm Roots
Bohlweki-SSI Environmental Services
P O Box 867
GALLO MANOR
2952

Fax No: (011) 798 6010

Dear Mr. Roots

ACKNOWLEDGEMENT OF RECEIPT OF THE APPLICATION FORM FOR THE PROPOSED CONSTRUCTION OF 40MW OPEN CYCLE GAS TURBINE, AMERSFOORT, MPUMALANGA PROVINCE

The Department confirms having received the application form for environmental authorisation of the abovementioned project on 13 August 2009. You may proceed with the scoping process required in terms of the Environmental Impact Assessment Regulations, 2006.

The application has been assigned the reference number **12/12/20/1617**. Kindly quote this reference number in any future correspondence in respect of the application.

The Applicant must ensure that all requirements of Chapter II, Section 38 of the National Heritage Resources Act, Act 25 of 1999, are complied with in this EIA process, and that the comments and /or recommendations of the relevant heritage resources authority responsible for the area in which the development is proposed, is considered.

You are hereby reminded that the activity may not commence prior to an environmental authorisation being granted by the Department.

Yours sincerely

Ms Lize McCourt
Chief Director: Environmental Impact Management
Department of Environmental Affairs
Letter signed by: Mr. Mogole Mphahlele
Designation: SID's Officer: Environmental Impact Evaluation

Date: 2009.08.17

Dr. Mark van der Riet

Eskom Holdings Limited

Fax: 011 629 5542

APPENDIX B
PUBLIC NOTIFICATIONS

state-owned enterprise and privately owned land it will work primarily with engineering projects undertaken

PROPOSALS SERVICES

TENDER DESCRIPTION	EVALUATION CRITERIA	CLOSING DATE	CONTACT PERSON
Rehabilitation and signage	90/10	23 OCTOBER 2009	W. Makgoba (014) 718 3363
Waterberg brand	90/10	23 OCTOBER 2009	

4 OCTOBER 2009 CITY PRESS

ENVIRONMENTAL IMPACT ASSESSMENT FOR THE CONSTRUCTION OF A 40MW OPEN CYCLE GAS TURBINE AND ADDITIONAL INFRASTRUCTURE IN THE AMERSFOORT AREA, MPUMALANGA PROVINCE
REF NO: 12/12/20/1617

Notice is hereby given in terms of the Environmental Impact Assessment Regulations published in Government Notice No.R385 to No.R387 of 2006, in terms of Section 24 (5) of the National Environmental Management Act (Act No 107 of 1998), of Eskom Holdings Limited's intent to carry out the following activity:

- Construction of a 40MW OCGT demonstration plant, to prove the concept of using Underground Coal Gasification (UCG) gases for electricity generation via turbines and demonstrate the sustainability of the process.
- Electricity produced will be utilised by the UCG plant and any excess will be entered into the National Grid via the Majuba Power Station systems.
- This EIA study will be used to support the Mining Right application (to be lodged at a later stage) for the UCG project which is currently operating under a renewed prospecting right issued by the Department of Minerals and Energy on 24 February 2009 (MP30/5/1/1/2/1144 PR).
- The study area for the EIA consists of the following core farms:
 - Roodekopjes 67HS
 - Rietfontein 66 HS (including Klein Rietfontein 117HS)
 - Japtrap 115HS
 - Palmietspruit 68HS
 - Tweedepoort 54HS
 - Koppieskraal 56 HS
 - Bergvliet 65 HS
 - Weiland 59 HS
 - Strydkraal 53HS

AVAILABILITY OF THE DRAFT SCOPING REPORT FOR REVIEW

All Interested and Affected Parties (I&APs) are hereby notified of the availability of the draft Environmental Scoping Report (ESR) for public review and comment. The draft ESR will be available for a period of 30 calendar days from **12 October 2009 to 12 November 2009**. The report sets out the findings of the Scoping Study and recommendations from the specialist studies that have been conducted to date. Copies of the report will be available electronically on the websites of Bohlweki-SSI Environmental (www.bohlweki.co.za) and Eskom website (www.eskom.co.za). Hard copies will also be made available at the following public venues for your access and review:

- Volksrust Public Library, Cnr Joubert & Laingsnek in Volksrust
- Amersfoort Public Library, Cnr Plein & Bree, Amersfoort
- Daggakraal Public Library, Daggakraal
- Office of Bohlweki-SSI Environmental, Woodmead, Gauteng Province

Please submit your written comments on this draft ESR by no later than **12 November 2009** to the public participation consultants below.

NOTICE OF THE PUBLIC MEETING

The Public Meeting will provide Interested and Affected Parties (I&APs) with information regarding the proposed project and will provide an opportunity to raise any issues and concerns. All individuals or groups interested in, or affected by, the project are invited to attend a public meeting to be held on:

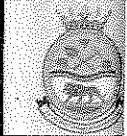
Date: Tuesday, 20 October 2009
Time: 16h00 – 18h00
Venue: Volksrust Town Hall, Cnr Joubert & Laingsnek in Volksrust, Mpumalanga Province

WHO SHOULD YOU CONTACT?

Bohlweki-SSI Environmental has been appointed by Eskom Holdings as independent Environmental Assessment Practitioner (EAP) to undertake the required environmental impact assessment process and the associated public participation process for the proposed project.

If you would like to register as an Interested and Affected Party (I&AP), please submit your name, contact information and your interest in the project to:

Sibongile Hlomuka or Yolisa Zokufa at Bohlweki-SSI Environmental
P O Box 867
Gallo Manor, 2052
Tel: (011) 798 6001 - Fax: (011) 798 6010
E-mail: majubaucq@bohlweki.co.za



BID NO.
SCM/CS01/2
SCM/CS02/2
SCM/S03/20
SCM/S04/20
MIG/NW/080

Tender documents
Municipality
indicated do
All submissi
addressed to
Administrative
Tender docu
and reserves
and referenc
The tender
be accepted

APPENDIX C
I&AP DATABASE

Eskom UCG Database - October 2009		
First Name	Last Name	Company
	Bam Trust	Johan Bam Trust
A A	de Pooter	Seme Municipality
A E	Redman	Amcoal
A G	Cronje	Volksrust Boere Vereniging
A G	Visser	Volksrust Farmers Association
A J	Spies	Standerton District Agricultural Union
A J	van Sittert	Volksrust Farmers Association
A L	Delport	Amersfoort District Agricultural Union
A L	Smalberger	Volksrust Farmers Association
A M C	Theron	Volksrust Farmers Association
A P G	van Zyl	Standershoop
A S	du Plessis	Standerton District Agricultural Union
A S	Podges	Volksrust Farmers Association
A.	Cornelius	Amersfoort Distrik Landbou-Unie
A.	De Jager	Plaas Remhoogte 428: Gedeelte 23
AB	Wessels	Amersfoort District Agricultural Union
ABH	Rossow	Labalelo Water Ass
Abraham	Sibiya	Mpumalanga Parks Board
AH	Wessels	Standerton District Agricultural Union
AJ	Louw	Volksrust Farmers Association
Albethina	Phakathi	ANC
Alf	Uckerman	SAPD
Alfa	Kumwenda	Kumwenda Logistics
Alfred M	Ngwenya	Fanani Matimade Construction CC
Allan	Batchelor	Wetland Consulting Services
AM	Pienaar	Amersfoort District Agricultural Union
AM	Smit	Amersfoort District Agricultural Union
André	Lombard	Plaas De Vereeniging
Andre	van Rensburg	Pixley - ka - Seme Local Municipality
André	Labuschagne	Plase Koppieskraal en Palmietspruit
André	Lombard	Plaas De Vereeniging
Andre	Mynhardt	Mpumalanga Tourism Authority
Andre	Spies	Leeuwfontein
Andrew	Thomson	Arnot Colliery
Andries	Lueschner	Goldfields
Andries	Rautenbach	Tweedronk
Anthony	Lamb	Anglo Coal
AO	Struwig	Amersfoort District Agricultural Union
Arinda	van der Merwe	Mooigelegen/ Springfontein
Arnold	Eksteen	Standerton District Agricultural Union
Arrie	Eksteen	Plase Katspruit
AS	Niemand	Amersfoort District Agricultural Union
Attie	Cloete	Bankjesdraai
Awie	De Jager	Plaas Rietvlei 433: Gedeelte 15
B	Uys	Wakkerstroom Farmers Union
B J	Joubert	Wakkerstroom Farmers Union
B W	J Laas	Amersfoort District Agricultural Union
B.	Johnson	Schurf du Poort
Baard	Boshoff	Plaas Vlakspruit
Bart	Joubert	Plaas Vlakplaats Ged 49
Basie	Von Wielligh	Plaas Uitgezocht 436IS
Bellina Z	Nkabinde	Private
Ben	de Klerk	Plaas Transvalia
Ben	Nkambule	Private
Benjamin	Moduka	Provincial Heritage Resources Authority
Bernard	Scheepers	Plaas Grootgewaagd
Bernice	Lue-Marais	Technology for Development - CSIR
Billy	Te Water	Plaas Brandwacht
Blacky	Swart	Plaas Villiersskrik
Bonga	Msomi	Department of Agriculture
Brian	Floyd	Witbank Chamber of Commerce
Budu	Kubheka	ANC
Burger	Du Toit	Anglo Coal - Mafube Colliery
Busi	Mazibuko	ANC
Busisiwe	Dube	Community Member
C C C	Arnoldi	Amersfoort District Agricultural Union
C J	Schoonraad	Standerton District Agricultural Union

C J	Uys	Volksrust Farmers Association
C J	Engelbrecht	Amersfoort District Agricultural Union
C L	Greyling	Amersfoort District Agricultural Union
C L	Sutcliffe	Standerton District Agricultural Union
C T	Fourie	Amersfoort District Agricultural Union
C T	van der Merwe	Volksrust Farmers Association
C.	Watermeyer	Volksrust Farmers Association
Callie	van der Linde	Bankjes Draai
Careen	Swart	Department of Health
Carl	Ziervogel	C F Ziervogel Farmers
Cathriena	Struwig	Amersfoort Public Library
CC	Lourens	Amersfoort District Agricultural Union
CC	van der Merwe	Amersfoort District Agricultural Union
CC	van der Merwe	Standerton District Agricultural Union
CE	Saayman	Inwoner
Cecilia	Mathenjwa	Aflease Gold & Uranium Resources Ltd
Cecilia A V	Venter	Private
Chantelle	Le Grove Smith	Eskom UCG
Charl	Nolte	EXXARO
Charles	Deacon	Volksrust Farmers Association
Charles	Simelae	Private
Chris	Theron	Bigen Africa
Chris	van Zyl	Rietspruit Crushers
Cingile	Mtshali	Private
CJ	Smith	Amersfoort District Agricultural Union
Claud	Keytel	Spoornet
Cobus	Thomlison	Afrikaanse Handelsinstituut
Coennie	Vermaak	Murray and Roberts Construction
CW	Hodsdon	Volksrust Farmers Association
D	Arnoldi	Amersfoort District Agricultural Union
D G	du Preez	Standerton District Agricultural Union
D J	Swart	Standerton District Agricultural Union
DA	Wessels	Amersfoort District Agricultural Union
DA	Wessels (Jnr)	Amersfoort District Agricultural Union
Dan	Masite	SANCO
Danie	Gildenhuis	Eastern Transvaal Co-op
Danie	Greyling	Plase Topfontein & Standershoop
Danie	Janse van Rensburg	Uitkyk
Danie	Struwig	Traffic Department
Danie	Els	Plaas Strydkraal
Danie	Kasselman	Plaas Potfontein
Daniel	Els	Daniel Els Testamentere Trust
Dave	Minney	Private
Dave	Salter	Barplats Investments Limited
David	Van der Linde	Tweedronk
Dawood	Mayet	Lekwa Local Municipality
Delisile	Mathebula	Community Member
Deon	van der Westhuizen	District Agricultural Union
Deon	du Plessis	Department of Minerals and Energy
DF	Landman	Volksrust Farmers Association
Dick	Viljoen	Amersfoort Municipality
Dieter	Hoffmann	Department of Public Works, Roads & Transport
Dirk	van der Merwe	Department of Minerals and Energy
DJ	van der Linde	Standerton District Agricultural Union
Dreinie	Swanepoel	Amersfoort District Agricultural Union
Dudu	Mathebula	ANC
Dumazile W	Hlatshwayo	Community Member
Dumile	Msibi	Private
Dumsane	Sithole	SACP
E P J	Brits	Volksrust Boere Vereniging
E.	Hart	Amersfoort District Agricultural Union
Easy	Sikhosana	Plaas Hoffontein
Ebert	du Plessis	Plaat Potfontein
Eddie	Deacon	Boerdery
Eddie	van Wyk	Department of water Affiars
Edna	Mtshali	Daggakraal
Edward	Deacon	Private
EL	Rautenbach	Amersfoort District Agricultural Union
EL	van der Merwe	Amersfoort District Agricultural Union
Elizabeth	Yende	ANC

Elizabeth Jacomina	Noitje	Private
Ellie	Maseko	ANC
Elna	Wahl	Mooikrans Equus
Elsie	Motha	ANC
Elvis	Nkosi	Private
Elzabé	Erasmus	Plaas Zwakfontein
Emma	Hlakutsa	Pixley ka Seme Municipality
Emma	Hlakutse	Private
EN	Matya	Duvha Power Station
Ephraim	Msibi	Amersfoort TRC
Eric	Linda	Private
Eubus	Pretorius	Boer
Eugene	du Preez	Plaas Palmietfontein
Eugene	van Dyk	Pixley ka Seme Local Municipality
Eunice	Sikonde	Private
Ewoud	van der Merwe	Ewoud van der Merwe (Pty) Ltd
F	Scheepers	Amersfoort District Agricultural Union
F C	Eichstadt	KwaGuga Town Council
F J	Kriek	Amersfoort District Agricultural Union
F P	Dafel	Bodium Trade (Seun van Coenie Dafel)
F.	Cornelius	Amersfoort Distrik Landbou-Unie
Faan	Kok	Plaas Platberg
Faan	de Swardt	Amersfoort District Agricultural Union
Fanie	Fourie	Plaas De Vereeniging
Fannie	Mahlangu	Mpumalanga Parks Board
Fanus	Van den Bergh	Plaas Tweedronk
Fikelephi	Luthuli	Private
Fikile	Mnisi	Private
FJ	Marais	Volksrust Farmers Association
Flip	Snyman	Plase Frischgewaagt & Sterkfontein
Frances	Theron	Plaas De Goedehoop/Sterkfontein
Francios	Lotz	Agri Mpumalanga
Francis	Thackery	Transvaal Museum
Francois	Greyvenstein	Private
Francois	Koegelenberg	Department of Agriculture and Land Administration (Nooitgedacht ADC)
Francois	Ströh	Plaas Rietvlei
Frans	Kruger	Plaas Grootvlei
Frans	Lotz	Plaas Weltevreden
Freek	Timilison	Agri SA
Friedah	Mnguni	Women Builders Association
Frik	Els	Plaas Koppieskraal
Frik	Visser	Visser Boerdery/Plaas Goedehoop
G	Barnes	WESSA-Northern Areas region
G	Rabe	Wakkerstroom Farmers Union
G J	du Toit (Jnr)	Kwaggafontein 460 JS/Hamelfontein 462 JS/Kopermijn 435 JS
G.	Lang	Chief: Health Services
G.	Beukes	Amersfoort Distrik Landbou-Unie
Gaffie	Van der Merwe	Plaas Grootvlei
Gareth	Williams	Anglo Coal Kleinkopje/Landau/Kromdraai Collieries
Garth	Batchelor	Department of Agriculture and Land Administration
Gawie	Rademeyer	Waterval & Grootdraai Forum
Gehardus	Richards	Private
George	Minaletto	Anglovaal Minerals Limited
Gerard	Damstra	Department of Public Works
Germeton	Semelane	Private
Gert	Nicolas	Department of Trade and Industry
Gert	Smith	Agri Mpumalanga
Gert	Swanepoel	Plaas Grootgewaagd
Gert	van der Merwe	Plaas Holfontein
Gert	Swart	Plaas Kaalspruit
Gift	Kgoebane	Pixley ka Seme Local Municipality
Godfrey	Tshivhalavhala	SAHRA MP
Goodness	Phakathi	Daggakraal
Gousie	Swanepoel	Plaas Tweedepoort
Gugu M	Maseko	ANC
H	Davel	Wakkerstroom Boere Vereniging
H G W	Bamm (Jnr)	Amersfoort Distrik Landbou-Unie
H G W	Bamm	Amersfoort Distrik Landbou-Unie
H J W	Vosloo	Volksrust Farmers Association
H M M	Uys	Volksrust Farmers Association

H S	Kriek	Amersfoort District Agricultural Union
H W	Ras	Amersfoort Distrik Landbou-unie
H.	Rautenbach	Standerton District Agricultural Union
Hannah	van Rooi	Thuthukani Joint Forum
Hannes	Lombard	Westend Landgoed
Harry	Rex	Anglo Gold Ashanti
Hennie	Marais	Plaas Zwakfontein
Hennie	van der Merwe	Plaas Arbeidadel
Hennie	Gebhardt	Welbedacht
Hennie	Laas	Volksrust Boere Vereniging
Herman	Wenhold	Sasol Mining - Coal Division
Hettie	van Loggerenberg	Plase Strydkraal & Palmietspruit
HI	Landman	Amersfoort District Agricultural Union
Hilda	van Rooyen	CSIR
HJ	Ferreira	Volksrust Farmers Association
Howard	Benkenstein	Department of Environmental Affairs and Tourism
HP	Geldenhuis	Volksrust Farmers Association
Ilma	Brink	BIGENAFRICA
Ivin	Riggs	NDA.AGRI
J	Uys	Wakkerstroom Farmers Union
J A	Potgieter	Volksrust Farmers Association
J A J	Bekker	Amersfoort Distrik Landbou-Unie
J C	Venter	Volksrust Farmers Association
J der	Merwe	Plaas Grootvlei
J F N	Brits	Volksrust Boere Vereniging
J G	Vosloo	Volksrust Farmers Association
J H	Deacon	Wakkerstroom Farmers Union/
J H	Hattingh	Amersfoort District Agricultural Union
J H	Korff	Amersfoort District Agricultural Union
J H	Labuschagne	Wakkerstroom Farmers Union
J H A	Prinsloo	Volksrust Farmers Association
J H L	van Zyl	Villiersschrik
J J	Grobler	Amersfoort District Agricultural Union
J J	Lamprecht	Amersfoort District Agricultural Union
J J	Theron	Volksrust Farmers Association
J J	du Toit	Amersfoort District Agricultural Union
J J	Moolman	Amersfoort Distriks Landbou-unie
J M K	Uys	Volksrust Farmers Association
J P	de Wet	Standerton District Agricultural Union
J S	Willemse	Volksrust Farmers Association
J W	Moolman	Volksrust/Wakkerstroom District Agric Union
J.	Rademeyer	Department of Agriculture
J. A.	Botha	Plase Sterkfontein & Driehoek
JA	Groenewald (Jnr)	Standerton District Agricultural Union
JA	Horn	Volksrust Farmers Association
Jaap	Viljoen	BHP Billiton Energy Coal South Africa Limited
Jabu	Caba	Department of Social development & Health
Jabulani	Luthuli	Seme Local Municipality
Jabulile	Msibi	Private
Jabulile	Msibi	Daggakraal
Jabulile	Msibi	Local Community eZamokuhle
Jackie	Madisha	Plaas Hoffontein
Jacobus	Swart	Private
Jacomina	Lotz	Private
JAK	Smit	Amersfoort District Agricultural Union
Jan	Coertzen	Vryheidsfront
Jan	Greyling	Winckler Vos Waardeerders
Jan	Human	TAU SA
Jan	Lambrechts	Plaas Rietfontein
Jan	Schoonraad	Plaas Uitkyk
Jan	Van Rensburg	Plaas Reebokfontein (MJJ Oosthuizen Trust)
Jan	Weideman	Plaas De Roodepoort
Jan	Lambrecht	Private
Jan	Rautenbach	Billiton Mining Rights
Jan L.	Fourie	Plaas Transvalia, Ged 6 & 8
Janine	Bothman	SANRAL
Janneman	Landman	Plaas Brakfontein
Janneman	van der Merwe	Plaas Hoffontein
Janneman	Landman	Plaas Brakfontein
Jannie	Myburgh	Plase Kromdraai & De Vereeniging

Jannie	Van der Westhuizen	Sasol Mining
Jansen	de Villiers	Plaas Holvlei
Japie	Grobler	Agri SA
Jayshree	Govender	National Road Agency
Jean	le Roux	Department of Health, Welfare and Gender Affairs
Jenny	Jeftha	Central Energy Fund
JF	Joubert	Volksrust Farmers Association
JF	Moll	Amersfoort District Agricultural Union
JH	Ferreira	Volksrust Farmers Association
JH	Landman (Jnr)	Amersfoort District Agricultural Union
JHH	van Rensburg	Amersfoort District Agricultural Union
JHM	van Niekerk	Amersfoort District Agricultural Union
Jl	van Niekerk	Amersfoort District Agricultural Union
JJ	Goosen	Standerton District Agricultural Union
JJ	Louw	Volksrust Farmers Association
JJ	Potgieter	Amersfoort District Agricultural Union
JJ	Pretorius	Standerton District Agricultural Union
JJ	van der Wath (Jnr)	Standerton District Agricultural Union
JJP	Viljoen	Standerton District Agricultural Union
Jo	Onderstall	Botanical Society of South Africa
Joachim	Van Aswegen	Tweedronk
Joël	Malan	Department of Water Affairs and Forestry
Johan	Bam	Plaas Palmietspruit
Johan	Blaauw	Department of Public Works, Road and Transport
Johan	Coetzee	Mpumalanga Parks Board
Johan	Dassue	DWAF
Johan	du Plessis	Plaas Niekerksvley
Johan	Fourie	Plaas Rietvlei
Johan	Theron	Plaas De Goedehoop
Johan	van der Bergh	Plaas Drinkwater
Johan	van der Walt	Plaas Niekerksvley
Johan	van Niekerk	Jomar Trust
Johan	Ziervogel	C F Ziervogel Farmers
Johan	Naude	Plaas Driehoek
Johan & Gerrit	Odendaal	Landowner
Jonnie	Wahl	Mooigelegen
Joseph	Ngobeza	Private
Joseph	Stevens	Plaas Vlakfontein
Josiah	Mayalla	Local Community eZamokuhle
JP	J Muller	Standerton District Agricultural Union
JP	Marais	Volksrust Farmers Association
JP	van der Merwe	Amersfoort District Agricultural Union
JPC	Meyer	Standerton District Agricultural Union
JS	Grobler	Standerton District Agricultural Union
JS	Uys	Standerton District Agricultural Union
Jurg	Human	Plaas Brakfontein
JV	Uys	Standerton District Agricultural Union
JW	van Niekerk	Amersfoort District Agricultural Union
K T	Masipa	Local Government Mpumalanga
Karel	Erasmus	Plase Uitgezocht & De Vereeniging
Kgathi	Sathekge	SOCDEV - GOV
Kgothatso	Makgato	Department of Land Affairs
Khanyisile	Thabela	Local Community eZamokuhle
Kobus	de Jager	Plase Tweefontein, Skuilplaas & Kroonstad
Kobus	Fourie	Plaas Liebenberg
Kobus	Van Staden	Plaas Tweedraai
Kolani	Thivhulawi	Department of Minerals and Energy
Koos	Dafel	Plaas Grabe's Rust
Koos	Swart	Boer
Koos	van Niekerk	Amersfoort District Agricultural Union
Koos	Swart	Plaas Slangfontein
Kotzé	Smit	Plaas Virginia
KP	Potgieter	Amersfoort District Agricultural Union
L	Buys	Department of Provincial and Local Government
L	De Jager	Pixley ka Seme Local Municipality
L C	Moll	Volksrust Farmers Association
L J	van Edu	Volksrust Farmers Association
L K	Joubert	Amersfoort District Agricultural Union
Laurence	Greyrenstein	ESKOM Majuba
Lene	Groblaar	Department of Environmental Affairs and Tourism

Leo	van den Berg	Department of Water Affairs and Forestry
Leon	Grové	Seme Local Municipality
Leon	Grove	Private
Lerato	Makangku	Department of Labour
Lindiwe	Jobela	ANC
Lindiwe	Mzizi	ANC
Lindiwe	Ngwenya	ANC
Lizette	Fritz	Plaas Tweedronk
Lizzie	Mosefoga	Private
Lizzie	Thela	ANC
Lood	de Jager	Pixley Ka Seme Local Municipality
Lou	Duvenoge	Eskom UCG
Louis	Botha	Tweefontein Boerdery Trust
Louis	Marneweck	Standerton TLC
Louis	van Rooy	University of Pretoria
Louise	Basson	Plaas Driehoek & Sterkfontein
Lourie	Bosman	Agri Mpumalanga (Plaas Uitgezogt)
M	Joubert	Volksrust Farmers Association
M	Moller	Wakkerstroom Farmers Union
M E.	de Beer	Witbank Development Forum
M J	Jacobs	Department of Health, Welfare and Gender Affairs
M L B	Moloyi	Seme Municipality
M P	de Jager	Amersfoort Distrik Landbou-Unie
M P	Mothiba	Department of Labour
M W D J	Spies	Volksrust Farmers Association
M.	Ishmael	Town Manager Pine Ridge
Machiel	Beukes	TLU: Ermelo Distrik Landbou Unie
Makao	M	NRA
Malcolm	Roodt	Bohlweki SSI Environmental
Malcolm	Tyler	Bankjesdraai
Mandie	van Zyl (Schoonraad)	Plaas Uitkyk (Renting)
Mandla	Shabangu	Private
Manie	van Aswegen	Plaas Tweefontein
Mapaseka	Madonsela	Pixley ka Seme Local Municipality
Maria	Beukes	Private
Maria	Ndlovu	ANC
Marinda	Koekemoer	SANBI - National Herbarium
Marius	Coetzer	Department of Agriculture and Land Affairs
Mark	Edwards	DLM Consulting Engineering
Mark	Van Der Riet	ERID ESKOM
Maroti	Ramahota	Department of Land Affairs
Martin	Struthers	Department of Agriculture and Land Administration
Mary	Arnaldo	Pixley ka Seme Local Municipality
MD	Mahlalele	Department of land Affairs
Mfazana	Vilakazi	Private
Michael	Braack	Working for Water
Micheal	Nyirenda	MDALA -ERMELO
Mike	Yorke-Hart	SANRAL
Minke	Lotz	Plaas Mooigelegen
Miriam	Makhomboti	ANC
MJ	ELLman	National Electricity Regulator
Molatelo	Montwedi	DPLG - GOV
Molatelo Klaas	Phosa	Department of Agriculture and Land Administration
Morero	Mashao	Eskom Generation
MP	Taute	Transvaal Agricultural Union of South Africa
MP	Taute	Transvall Agricultural Union
Mpho	Moholo	SOCDEV - GOV
Mpume	Nkumane	Community Member
Mthuliseni	Mathebula	ANC
Mzemo	Nangeliso	National Research Foundation
Mzikayitani	Thwala	Private
N	Tuohy	SEA Banard Familie Trust
N I	Sibeko	Amersfoort TRC
N J	Arnoldi	Amersfoort District Agricultural Union
N.L	Bosman	Agri Mpumalanga
Naas	Steyn	Standerton District Agricultural Union
Natasha	Halbich	Mpumalanga Wetland Forum
Natie	van der Merwe	Plaas Koppieskraal
Ncamile	Kuta	Private
Ncamile	Kula	Private

Ned	Tuohy	Plaas Palmietspruit
Neels	du Toit	Dept of Provincial and Local Government
Nelly	Twala	ANC
Nesta	Hlangala	Chief's Council Sinqobile
Nhlanhla	Mkonto	Xstrata Coal SA
Nic	Grobbelaar	Private
Nic	Opperman	AgriSA
Nic	Opperman	Agri SA
Nick	Momberg	Plaas Weltevrede
Nico	Du Rand	Plaas Zwakfontein
Nico	I De Vos	Plaas Langsloot/Dieplaagte/Rietfontein (Kinross 133 restant (A1314/56))
Nico	Swart	Plaas Roodepoort
Nico	Grobler	Plaas Tweefontein
Nik	Lesufi	Chamber of Mines South Africa
NJ	Jooste	Volksrust Farmers Association
NJ	van der Merwe	Standerton District Agricultural Union
Nkosingiphile G	Manana	Private
Nomusa	Ngcobo	ANC
Nomvula	Kubheka	Private
Nontokozo	Zwane	Department of Water Affairs and Forestry
Nsizwana	Maseko	Private
Ntate Josias	Mabilo	Department of Roads and Transport
Ntime	Skosana	Office of the Premier
Ntombi	Ndlovu	ANC
Ntombikayise	Kubheka	ANC
Ntombikayise	Kubheka	ANC
O J	Mkhalphi	Private
Obert	Mkhatshwa	DALA
Ockie	Van Den Berg	DWAF
Ockie	Venter	Plaas Vlakspruit
Onismus	Serothwane	National Union of Mine Workers (NUM)
Ontibile	Moalosi	ENJF
Oubaas	Landman	Plaas Brakfontein, Remainder
P	Davel	Wakkerstroom Boere Vereniging
P	Erasmus	Standerton District Agricultural Union
P	Geldenduys	Wakkerstroom Farmers Union
P	Lund	Wakkerstroom Farmers Union
P	Martins	Volksrust Farmers Association
P	Moolman	Wakkerstroom Farmers Union
P B	Haasbroek	District Magistrate
P D	Jacobs	Amersfoort Distriklandbou-Unie
P F	de Wet	Amersfoort District Agricultural Union
P G A	Schoeman	Volksrust Farmers Association
P J J S	Potgieter	Volksrust Farmers Association
Pat	Nkosi	Local Government & Housing
Patrick	Zulu	Local Community eZamokuhle
Paul	Heydenrych	Standerton Distrik Landbou Unie
Paul	Mcadam	Anglo Coal Project Services
Paul	Grey	Plaas De Vereeniging, Uitgezicht & Grootgewaagd
Paul	Meulenbeld	Department of Water Affairs
PB	Janse van Rensburg	Standerton District Agricultural Union
Peet	Slabbert	Plaas De Goedehoop
Peter	Coombes	Anglo American Corporation Limited
Peter	Thabethe	Department of Agriculture
PH	Heerter	Volksrust Farmers Association
Phil	Tanner	I & AP Private Capacity
Philip	Maurin	Department of Health
Phillemon	Ngobeza	Private
Phillip	Dukashe	Tutuka Power Station
Phillip	Jacobs	Goldfields Limited
Phindile	Sithole	Private
Phindile J	Dhludhlu	ANC
Phindintombi	Mokoena	ANC
Pierre	Beegte	Plaas Welgedacht
Piet	Kemp	Transvaal Agricultural Union of SA
Piet	Richards	Plaas Tweedepoort
Pieter	Botha	Plaas Vlakspruit
Pieter	Eksteen	Plaas Rietvlei 433IS: Gedeelte 2
Pieter	Moloi	Private
Pieter	Smith	Plaas Trichardsfontein

Pieter	Venter	Strydkraal/ Palmiënspruit
PJ	Claasen	Standerton Distrik Landbou-Unie
Poppy	Mbuli	Private
Prashika	Reddy	Bohlweki Environmental
PS	van Rooyen	Amersfoort District Agricultural Union
PW	Duminy	Volksrust Farmers Association
PWB	Uys	Wakkerstroom Farmers Union/Volksrust Farmers Assoc
RAJ	van Wyk	Amersfoort District Agricultural Union
Regina	Nkosi	Women's League
Rentia	Robertson	Transitional Council of Standerton
RH	van Helsdingen	Amersfoort District Agricultural Union
Ria	de Jager	Volksrust Public Library
Ria	Loggenberg	Transvaal Agricultural Union of SA
Riaan	du Plessis	Plaat Potfontein
Riaan	van der Merwe	Landou Colliery
Riana	Bothma	Eskom - Corporate Services ERID
Richard	Worthington	SECCP of Earthlife Africa
Rika	du Plessis	Departement van Gesondheid en Welsyn
Rizka	Kfir	water Research Officer
Robert	Nkambule	Department of Public Works
Rod	Schwab	Department of Water Affairs and Forestry
Roelf	Nel	Amersfoort Co-op
Roelof	Hugo	Rietspruitmyn
Ronelda	Jordan	Ulusha Projects
Rosta	Mathebula	Private
Rudi	Van Der Waaldt	ESKOM Majuba
Rudi	van der Wal	Eskom Majuba P/S
S	van der Linde	Pixley ka Seme Local Municipality
S H	van Rensburg	Plaas Liebenberg
S J	van den Berg	Standerton District Agricultural Union
S S P	Viviers (Jnr)	Standerton District Agricultural Union
S.	Motswege	Department of Land Affairs
Sakkie	Fourie	Plaas Koppieskraal
Sam	Msibi	Department of Agriculture
Sam	Msibi	Department of Agriculture and Land Administration
Samual	Sithole	Vuku Usebenze Construction
Samuel	Masuku	Private
Sandile	Langa	African Rainbow Minerals
Sanele D	Nkosi	ANC
Sanet	van Jaarsveldt	DWAF
Sarah	Manana	ANC
Sarel	Kritzinger	Amersfoort District Agricultural Union
Sbongile	Tshabalala	ANC
Sbusiso	Majjaba	ANC
Selby	Hlatshwayo	Department of Agriculture and Land Administration
Sellinah	Mnsi	Private
SF	van der Merwe	Amersfoort District Agricultural Union
Shabier	Bhyat	Rietspruit Crushers
Shadrack	Moephuli	Agricultural Research Council
Sharon	Clark	BHP Billiton Energy Coal South Africa
Shereena	Mahabeer	Municipality
Sibongile	Hlomuka	Bohlweki Environmental
Sibongile	Msibi	Private
Sifiso	Kunene	Pixley ka Seme Local Municipality
Simphiwe	Ngowe	Department of Economic Development & Planning
Simphiwe	Kunene	Local Government & Housing
Simthandile	Mpondo	Eskom - Majuba Power Station
Sinugo	Phumudzo	DALA
Sipho	Khoza	ANC
Sipho	Mseleku	SADAC Chamber of Commerce
SJ	van den Berg	Standerton District Agricultural Union
Skhumbuzo	Nkosi	Private
Soc	Anderson	Twistdraai Colliery
Sombu	Motha	ANC
Sonto J	Shoba	ANC
Sophie	Hugo	Vrouelandbou Unie
SP	Malan	Volksrust Farmers Association
SSP	Viviers (Jnr)	Standerton District Agricultural Union
Stanley	Motua	Private
Stanley	Motha	Private

Stephanus	Smith	Plaas Vlakspruit
Steve	Goodwin	Plaas Roodekopjes
Surgeon	Marebane	MDALA ERMELO
Susan	Van der Merwe	Plaas De Vereeniging, Ged 13
Syd	Parkhouse	Anglo Coal Project Services
Sydney	Sehlako	ANC
Sylvia	Mavimbela	Pixley ka Seme Local Municipality
T F	Kubheka	Amersfoort TRC
T J	Cronje	Volksrust Boere Vereniging
T J	Ngwenya	Amersfoort TRC
T R	Dannhauser	Amersfoort District Agricultural Union
T S	Martins	Volksrust Farmers Association
T S	Schoeman	Volksrust Farmers Association
T.V	Pungwayo	Amersfoort Combined Schoo
Tertia	Griesel	Secunda Public Library
Thabile	Kunene	ANC
Thabisile	Rakghoto	Department of Water Affiars and Forestry
Thabo	Kgomo	SAHRA - Head Office
Thabo	Madihlaba	Environmental Justice Networking Forum (EJNF)
Thandabantu s	Xulu	Private
Thandeka	Mabuza	Private
Thandi Irene	Masuku	Daggakraal
The Director	The Director	Department of Agriculture, Conservation, Environment,
Themba	Majola.	Plase Onverwacht & Roodebloem
Thembi	Msibi	ANC Youth League
Theo	Wassenaar	Transvaal Landbou Unie
Theuns	van der Merwe	Plaas Verblydend
Thivhulawi	Kolani	Department of Minerals and Energy
Thoko	Thwala	Private
Thoko	Yende	ANC
ThoKozani	Metiso	DALA
Thokozani S	Mnisi	Private
Thokozile	Mabuza	Chief's Council Daggakraal
Thomas	Gyedu-Ababio	South African National Parks
Thomas	Madonsela	Plaas Holfontein
Thomas	Sithole	ANC
Thumi	Nkotsana	National Department of Agriculture
Tinus	Taute	TLU
Tiny	Tshego	Department of Labour Relations
TJ	Basson	Standerton Distrik Landbou-Unie
TJ	Eksteen	Volksrust Farmers Association
TM	Laas	Volksrust Farmers Association
Tobile	Bokwe	Eskom - Generation
Tom	Moodie	Plaas Jan Hendriksfontein
Trevor	van den Berg	SANCO
Tshwelopelo	Mabena	PGP - GOV
Tswelopelo	Mabane	Dept of Transport Roads and Public Works
V	Niekerk	DWAF-Ermelo
van der	Schyff	Volksrust Farmers Association
Velepi	Kumalo	ANC
Veli	KaNkosi	Private
Vilhelm	Erichsen	Agri Middelburg
Vivian	Tshabalala	Summertime Shipping & Transport
Vusi	Madonsela	Department of Social Development
Vusi	Maseko	Private
Vusi S	Ndlovu	ANC
Vusimuzi	Dladla	Private
Vusimuzi	Lukhele	ANC
Vuyiswa	Tulelo	National Youth Commission
W C	Oosthuizen	Volksrust Farmers Association
W D K	Steenkamp	Standerton District Agricultural Union
W J	Fick	Amersfoort District Agricultural Union
W M	Durdle	Amersfoort District Agricultural Union
Walther	van der Westhuizen	Department of Water Affairs and Forestry
Wardi	Eksteen	Plaas Niekerksvley
Wessel	van As	Department of Local Government
Whitey	Maphakela	Department of Transport
Wilco	Uys	Twistdraai Colliery
Wilhelm	Berry	Mooigelen
Willem	van der Merwe	Plase Sterkfontein & Driehoek

Willie	Steenkamp	Plaas Eensgevonden
Willie	Venter	Plaas Vlakfontein
Willie	Fouché	Steve Tshwete Local Municipality
Wisdom	Mpofu	Gert Sibande District
Witness	Thela	Private
WJ	Grobbelaar	Standerton District Agricultural Union
WJ	Hepburn	Volksrust Farmers Association
Wolli	Winckler	Winckler Vos Valuers
Wouter	Schabort	Plaas Meyersvallei
Wynand	Marais	New Denmark Colliery
Z.H	Luhlanga	Perdekop Councillor
Zakhele	Vundla	Private
Zanele	Dlamini	Private
Zanele F	Sibaya	Amersfoort TRC
Zodwa	Dladla	Private

APPENDIX D
CORRESPONDENCE SENT TO I&APS



Botswana
Kenya
Mozambique
Zimbabwe
South Africa
Johannesburg
Bloemfontein
Cape Town
Durban
East London
Germiston
Kimberley
Knysna

28 August 2009 Ladysmith
Mafikeng
Mossel Bay
Pietermaritzburg
Polokwane
Port Elizabeth
Port Shepstone
Pretoria
Queenstown
Vryheid

Dear Interested and Affected Party (I&AP)

ENVIRONMENTAL IMPACT ASSESSMENT FOR THE CONSTRUCTION OF A 40MW ELECTRICAL OPEN CYCLE GAS TURBINE AND ADDITIONAL INFRASTRUCTURE IN THE AMERSFOORT AREA, MPUMALANGA PROVINCE

Notice is hereby given in terms of the Environmental Impact Assessment Regulations published in Government Notice No.R385 to No.R387 of 2006, in terms of Section 24 (5) of the National Environmental Management Act (Act No 107 of 1998), of Eskom Holdings Limited's intent to carry out the following activity:

- Construction of a 40MW OCGT demonstration plant, to prove the concept of using Underground Coal Gasification (UCG) gases for electricity generation via turbines and demonstrate the sustainability of the process. - UCG is a process where coal is gasified *in situ*. A matrix of wells is drilled into the coal bed, the coal is ignited and air/oxygen and water are pumped into the injection wells. Fire is essentially used to "mine" the coal and produce syngas (a mixture of CO₂, H₂, CH₄ and CO), which can be used directly as a fuel for either boilers or gas turbines.
- Electricity produced will be utilised by the UCG plant and any excess will be entered into the National Grid via the Majuba Power Station systems.
- This EIA study will be used to support the Mining Right application (*to be lodged at a later stage*) for the UCG project which is currently operating under a renewed prospecting right issued by the Department of Minerals and Energy on 24 February 2009 (MP30/5/1/1/2/1144 PR).
- The study area for the EIA consists of the following core farms:
 - Roodekopjes 67HS
 - Rietfontein 66 HS (including Klein Rietfontein 117HS)
 - Japtrap 115HS
 - Palmietspruit 68HS
 - Tweedepoort 54HS
 - Koppieskraal 56 HS
 - Bergvliet 65 HS
 - Weiland 59 HS
 - Strydkraal 53HS

SSI Engineers and Environmental Consultants (Pty) Ltd, trading as 'SSI' Reg No. 1966/001916/07
Building No. 5, Country Club Estate, 21 Woodlands Drive, Woodmead, 2191 / PO Box 867, Gallo Manor, 2052, South Africa

Telephone +27 11 798 6000 Facsimile +27 11 798 6006 Email corporate@ssi.co.za

Eskom Holdings Limited has appointed Bohlweki-SSI Environmental as an independent environmental assessment practitioner, to undertake the EIA study, and public participation process for this proposed project.

Bohlweki-SSI Environmental would like to invite you, as an interested and/or affected party (I&AP), to become actively involved in the public participation processes for this proposed project. Please find herewith attached the project Background Information Document which provides you with more information regarding the proposed project, EIA and public participation processes to be undertaken.

By completing and submitting the accompanying registration and comment form, you would automatically be registered as an I&AP on the project database. Bohlweki-SSI Environmental would like to thank you, in advance, for becoming part of the public participation process and is looking forward to receiving your valuable comments relating to the proposed project.

Kind regards

Sibongile Hlomuka
Social Development and Public Participation Consultant
Tel: 011 798-6010
Fax: 011 798 6010
Email: sibongileh@bohlweki.co.za



Botswana
Kenya
Mozambique
Zimbabwe
South Africa
Johannesburg
Bloemfontein
Cape Town
Durban
East London
Germiston
Kimberley
Knysna
Ladysmith
Mafikeng
Mossel Bay
Pietermaritzburg
Polokwane
Port Elizabeth
Port Shepstone
Pretoria
Queenstown
Vryheid

30 September 2009

Dear Interested and Affected Party (I&AP)

ENVIRONMENTAL IMPACT ASSESSMENT FOR THE CONSTRUCTION OF A 40MW OPEN CYCLE GAS TURBINE (OCGT) AND ADDITIONAL INFRASTRUCTURE IN THE AMERSFOORT AREA, MPUMALANGA PROVINCE

Notice is hereby given in terms of the Environmental Impact Assessment Regulations published in Government Notice No.R385 to No.R387 of 2006, in terms of Section 24 (5) of the National Environmental Management Act (Act No 107 of 1998), of Eskom Holdings Limited's intent to carry out the following activity:

- Construction of a 40MW OCGT demonstration plant, to prove the concept of using Underground Coal Gasification (UCG) gases for electricity generation via turbines and demonstrate the sustainability of the process. UCG is a process where coal is gasified *in situ*. A matrix of wells is drilled into the coal bed, the coal is ignited and air/oxygen and water are pumped into the injection wells. Fire is essentially used to "mine" the coal and produce syngas (a mixture of CO₂, H₂, CH₄ and CO), which can be used directly as a fuel for either boilers or gas turbines.
- Electricity produced will be utilised by the UCG plant and any excess will be entered into the National Grid via the Majuba Power Station systems.

This EIA study will be used to support the Mining Right application (*to be lodged at a later stage*) for the UCG project which is currently operating under a renewed prospecting right issued by the Department of Minerals and Energy on 24 February 2009 (MP30/5/1/1/2/1144 PR).

Eskom Holdings has appointed Bohlweki-SSI Environmental, as an independent environmental assessment practitioner, to undertake environmental studies and to identify and assess all potential environmental impacts associated with the above-mentioned project. As part of this EIA, a public participation process is required. This public participation process involves informing the Interested and Affected Parties (I&APs) about the proposed project and obtaining their comments and concerns.

To this end, a public meeting has been arranged (details provided below), the purpose of which is to discuss the project and obtain your comments and provide responses to issues of concern.

AVAILABILITY OF THE DRAFT SCOPING REPORT AND PLAN OF STUDY FOR EIA FOR REVIEW

All Interested and Affected Parties (I&APs) are hereby notified of the availability of the draft Environmental Scoping Report (ESR) for public review and comment. The draft ESR will be available for a period of **30** calendar days from **12 October 2009** to **10 November 2009**. The report sets out the findings of the Scoping Study and recommendations from the specialist studies that have been conducted to date. Copies of the report will be available electronically on the websites of Bohlweki–SSI Environmental (www.bohlweki.co.za) and Eskom website (www.eskom.co.za) Hard copies will also be made available at the following public venues for your access and review:

- Volksrust Public Library; Cnr Joubert & Laingsnek in Volksrust
- Amersfoort Public Library, Cnr Plein & Bree, Amersfoort,
- Daggakraal Public Library, Daggakraal
- Offices of Bohlweki –SSI Environmental, Woodmead, Gauteng Province

Please submit your written comments on this draft ESR by no later than **10 November 2009** to the public participation consultants (details below).

NOTICE OF THE PUBLIC MEETING

All individuals or groups interested in, or affected by, the project are invited to attend a public meeting to be held on:

DATE	TIME	VENUE
Tuesday, 20 October 2009	16h00-18h00	Volksrust Town Hall, Cnr Joubert & Laingsnek in Volksrust

WHO SHOULD YOU CONTACT?

If you would like to register as an Interested and Affected Party (I&AP), please submit your name, contact information and your interest in the project to:

Sibongile Hlomuka or Yolisa Zokufa at Bohlweki–SSI Environmental

P O Box 867

Gallo Manor, 2052

Tel: (011) 798 6001

Fax: (011) 798 6010

E-mail: majubaucg@bohlweki.co.za



Botswana
Kenya
Mozambique
Zimbabwe
South Africa
Johannesburg
Bloemfontein
Cape Town
Durban
East London
Germiston
Kimberley
Knysna
Ladysmith
Mafikeng
Mossel Bay
Pietermaritzburg
Polokwane
Port Elizabeth
Port Shepstone
Pretoria
Queenstown
Vryheid

06 October 2009

Dear Stakeholder

RE: ENVIRONMENTAL IMPACT ASSESSMENT FOR THE CONSTRUCTION OF A 40 MW ELECTRICAL OPEN CYCLE GAS TURBINE AND ADDITIONAL INFRASTRUCTURE IN THE AMERSFOORT AREA, MPUMALANGA PROVINCE

Eskom Holding Limited proposes a construction of a 40 MW Electrical Open Cycle Gas Turbine and additional Infrastructure in the Amersfoort area Mpumalanga Province. For this project to be undertaken an environmental authorisation is required and therefore an Environmental Impact Assessment (EIA) process is required to be undertaken in order to receive this environmental authorisation.

Eskom Holdings Limited has appointed Bohlweki –SSI Environmental, as independent consultants, to undertake environmental studies and to identify and assess all potential environmental impacts associated with the above-mentioned project. As part of this EIA, a public participation process is required. This public participation process involves informing the local authorities, Interested and Affected Parties (I&APs) and key stakeholders about the proposed project and obtaining their comments and concerns.

As part of the public participation process our project team would like to meet with the Environmental commenting authorities and stakeholders for a focus group meeting to discuss the proposed project and obtain their comments. The meeting is scheduled as follows:

- 20th October 2009 at 10h00, Mpumalanga Department of Agriculture and Land Affairs (MDALA) Offices, No 44 Church Street , Ermelo.

Kindly confirm your availability to me on 011 798 6429 or sibongileh@bohlweki.co.za.

Please do not hesitate to contact me for any clarity regarding the above.

Kind regards
Sibongile Hlomuka
Social Development and Public Participation Consultant
Tel: 011 798-6010
Fax: 011 798 6010
Email: sibongileh@bohlweki.co.za

APPENDIX E
BRIEFING PAPER

**ENVIRONMENTAL IMPACT ASSESSMENT
PROCESS**

**ENVIRONMENTAL IMPACT ASSESSMENT FOR THE
CONSTRUCTION OF A 40 MW OPEN CYCLE GAS
TURBINE AND ADDITIONAL INFRASTRUCTURE IN
THE AMERSFOORT AREA, MPUMALANGA
PROVINCE**

**BACKGROUND INFORMATION DOCUMENT
AUGUST 2009**



WHAT DOES THIS DOCUMENT TELL YOU?

This document aims to provide you, as an Interested and Affected Party (I&AP), with background information regarding the environmental impact assessment for the 40MW open cycle gas turbine (OCGT) and the associated Integrated Water Use License Application (IWULA) for the proposed water uses in the Amersfoort area, Mpumalanga Province. Furthermore, the document advises how you can become involved in the project, receive information and/or raise issues, which may concern and/or be of interest to you. The sharing of information forms the basis of the public participation process and offers you the opportunity to become actively involved in the project from the outset. Public participation plays an important role in the undertaking of an EIA as input from I&APs ensure that all potential issues are considered within the study.

PROJECT BACKGROUND AND NEED

Eskom Holdings Limited (Eskom) intend constructing a 40MW OCGT demonstration plant, to prove the concept of using Underground Coal Gasification (UCG) gases for electricity generation via turbines and demonstrate the sustainability of the project. This EIA study will also be used to support the Mining Right application for the UCG project which is currently operating under a renewed prospecting right issued by the Department of Minerals and Energy on 24 February 2009 (MP30/5/1/1/2/1144 PR). The IWULA will authorize all the water uses associated with the UCG process as well as the 40MW demonstration OCGT plant.

UCG is a process where coal is gasified *in situ*. A matrix of wells is drilled into the coal bed, the coal is ignited and air/oxygen and water are pumped into the injection wells. Fire is essentially used to “mine” the coal and produce syngas (a mixture of CO₂, H₂, CH₄

and CO), which can be used directly as a fuel for either boilers or gas turbines.

UCG has the potential to extract coal resources previously regarded as either uneconomic or inaccessible due to depth, seam thickness, seam slope, seam fracturing and displacement, or other mining and safety considerations. The ideal requirements for UCG are generally the opposite of the requirements for conventional underground mining, and hence UCG offers opportunity for expanding South Africa’s mineable coal reserve base by extracting coal previously disregarded as being unminable.

A simplistic illustration of the underground coal gasification process is given in Figure 1 below.

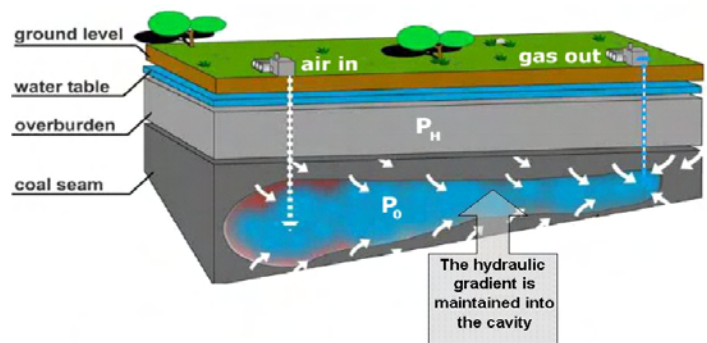


Figure 1: Schematic illustration of the UCG Process

Eskom is developing the UCG Project in a phased manner:

- Phase 1A -** Exploration for coal reserves. Exploration work was carried out to determine the size and nature of the coal reserve.
- Phase 1B -** Testing activities to determine the coal gas quality and combustion properties.
 - Gas production to start from 3,000 and increase to 15, 000 Nm³/h. Eskom commissioned the gas production pilot plant which flared the first UCG gas on 20 January 2007, and subsequently generated the first UCG electricity on the 31st May 2007 with a 100 kW reciprocating engine.
 - Gas is initially being flared and will eventually be co-fired at Majuba Power Station boilers as the work progresses.

Phase 2 - Increased production and co-firing testing

- Gas production to be increased to 105,000 Nm³/h. Gas will be produced and transported to Majuba Power Station for co-firing.

Phase 3 - Open cycle gas turbine demonstration plant

- 105,000 Nm³/h Gas production;
- Construction of a 40 MW OCGT demonstration plant, to prove the concept of using UCG gas for electricity generation *via* turbines and demonstrate sustainability of the process. Electricity produced will be utilised by the UCG plant and any excess will be entered into the National Grid *via* Majuba Power Station systems – **we are currently in this phase of the project.**

WHAT IS AN OCGT AND HOW DOES IT WORK?

An open cycle gas turbine (OCGT) power station consists of a combustion chamber, a compressor, a gas turbine and a generator. The compressor and the gas turbine are mounted on the same shaft. The compressor draws fresh air from the atmosphere and raises that air pressure, by compressing it, before sending this air to the combustion chamber. At the combustion chamber fuel is added to the compressed air and the total mixture is combusted resulting in hot gas entering the turbine at a temperature greater than 1300°C. This hot gas imparts the majority of its energy *via* a turbine to both the compressor and a generator. The open cycle gas turbine discharges exhaust to the atmosphere.

The total footprint of the 40MW OCGT demonstration plant is approximately 20ha and will consist of the following components:

- Gas turbine
- Station generators
- Start-up fuel storage
- Generating transformers
- HV Yard (88kV)
- Chimney

Other additional infrastructure will consist of the following:

- UCG mining process (boreholes, wells and pipes)
- Gas treatment plants

- Gas collection and transportation pipes
- Water treatment plant
- 88kV transmission line
- Auxiliary cooling system – cooling towers
- Access roads
- Centralized control room
- Ablution facilities
- Lined evaporation dam
- Delivery and collection bays for road transport to all chemical solvent and by-product tanks

THE PROJECT STUDY AREA

The following farms will be assessed during the EIA phase. Please refer to the Locality Map Figure: 2 attached at the back of this document.

- Roodekopjes 67HS
- Rietfontein 66 HS (including Klein Rietfontein 117HS)
- Japtrap 115HS
- Palmietspruit 68HS
- Tweedepoort 54HS
- Koppieskraal 56 HS
- Bergvliet 65 HS
- Weiland 59 HS
- Strydkraal 53HS

WHAT ARE THE POTENTIAL ENVIRONMENTAL IMPACTS ASSOCIATED WITH THE PROPOSED PROJECT?

A number of potential environmental impacts associated with the project have been identified. As part of the EIA, these potential impacts will be assessed through the following specialist studies:

SPECIALIST FIELD	ORGANISATION
Soils and Agricultural Potential	Dr Johan van der Waals – Terra Soil Science
Socio-economic Assessment	Nonka Byker and Raoul de Villiers – MasterQ Research
Heritage	Dr Johnny van Schalkwyk (Private)
Biodiversity	Riaan Robbeson – Bathusi Environmental Consulting
Wetlands	Paul da Cruz – SiVEST Environmental
Air Quality	Dr Raylene Watson – Bohlweki-SSI Environmental
Visual Assessment	Dawie van Vuuren - MetroGIS
Peer Review of Geological Study	Peet Meyer (Private)
Peer Review of Geohydrological Study	Reinhardt Meyer (Private)
Peer Review of Surface Water Study	Chris Waygood - Jones and Wagner

In the Environmental Scoping Study, desk-top specialist studies combined with a site visit will identify potential issues which require further investigation within the EIA phase. Input from the public through the public participation process provides valuable input in the identification of issues requiring investigation within this EIA process. The Environmental Scoping Study will highlight areas that should be avoided in order to minimise potential impacts, and evaluate the alternative sites recommended. The Scoping Study will recommend the most favourable alternative site/s for the assessment of the construction of a 40MW open cycle gas turbine and additional infrastructure for further investigation in the Environmental Impact Assessment phase.

The Environmental Impact Assessment phase will aim to achieve the following:

- to provide an overall assessment of the social and biophysical environments of the affected area by the proposed construction of the project;
- to undertake a detailed assessment of the preferred site/s in terms of environmental criteria including the rating of significant impacts;
- to identify and recommend appropriate mitigation measures for potentially significant environmental impacts; and
- to undertake a fully inclusive public participation process to ensure that I&AP issues and concerns are recorded and commented on.

WHY ARE ENVIRONMENTAL STUDIES NEEDED?

In terms of the Environmental Impact Assessment (EIA) Regulations Government Notice. R. 385 to No. R. 387 of 2006 published in terms of Section 24(5) read with Section 44 of the National Environmental Management Act (NEMA), 1998 (Act No 107 of 1998), Eskom Holdings requires authorisation from the Department of Water and Environmental Affairs (DW&EA) which was previously known as (Department of Environmental Affairs and Tourism) for the undertaking of the proposed project as it includes activities listed under Regulation 386 and 387 of the NEMA EIA regulations. Activities under these listings may have a detrimental effect on the environment, hence a full EIA process, as prescribed in Regulations 27 to 36 of the Environmental Impact Assessment Regulations (Regulation 385), will have to be undertaken.

An Environmental Impact Assessment (EIA) is an effective planning and decision-making tool, which allows for the identification of potential environmental consequences of a proposed project, and its management through the planning process.

Eskom Holdings has appointed Bohlweki - SSI Environmental, as an independent Environmental Assessment Practitioner (EAP), to undertake environmental studies to identify and assess all potential environmental impacts associated with the proposed project. As part of these environmental studies, all I&APs will be actively involved through a public participation process. The environmental studies will follow a two-phased approach:

- Phase 1: Environmental Scoping Study (ESS)
- Phase 2: Environmental Impact Assessment (EIA) and Environmental Management Plan (EMP)

The EIA process being followed for the project is presented in Figure 3 overleaf.

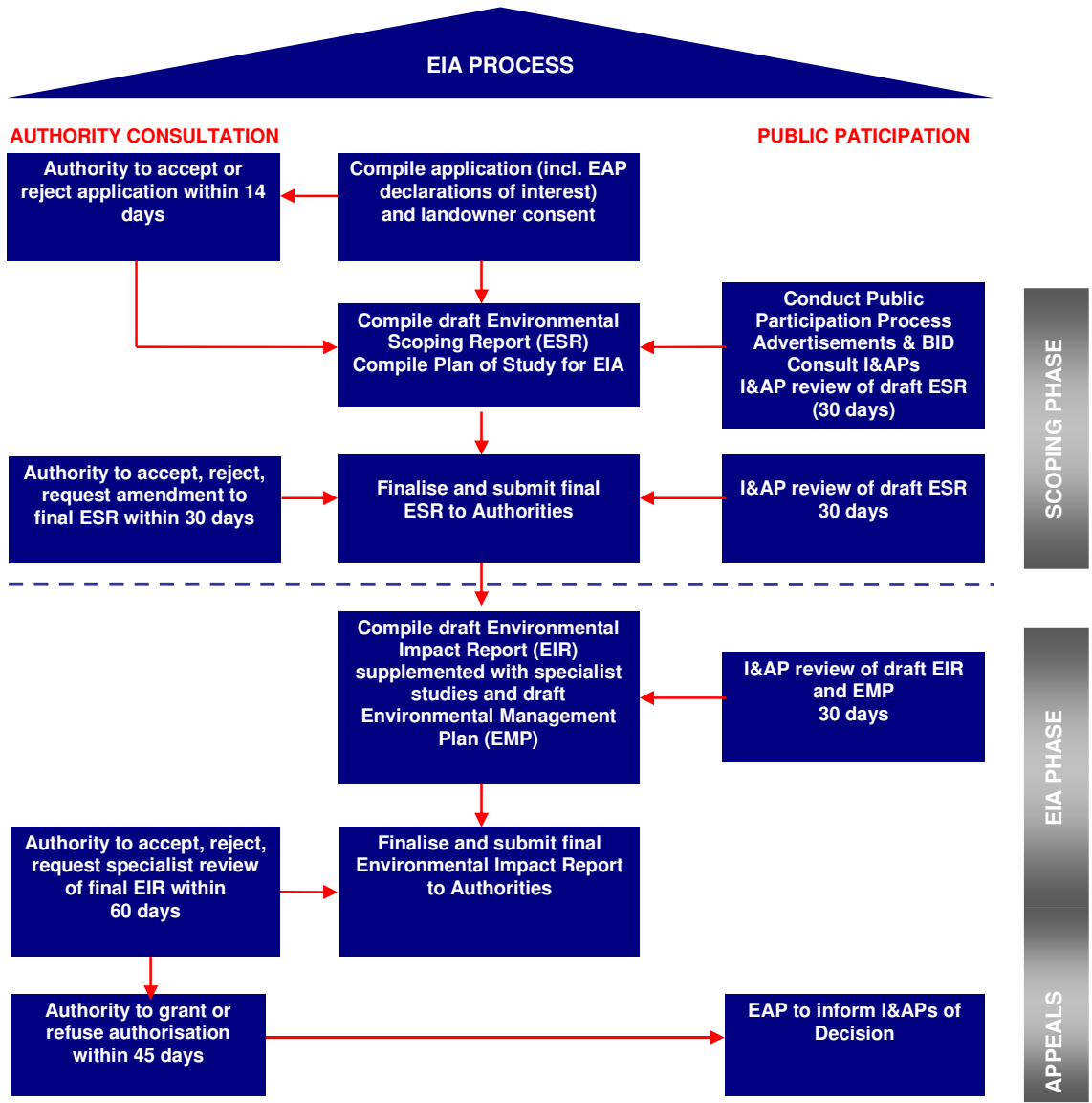


Figure 3: EIA process

INTEGRATED WATER USE LICENSE APPLICATION

The IWULA process will be conducted in accordance with Section 40 of the National Water Act, 1998 (Act No 36 of 1998).

The proposed activities and location of the UCG process, require various water use authorisations from the competent authority (Department of Water and Environmental Affairs).

The UCG water uses include:

- Abstraction of raw water
- Heating of water as part of the gas cooling process
- Storage of water in underground cavities and evaporation ponds
- Treatment of wastewater
- Construction of roads and pipelines which will cross various streams in the area.
- The possible impact on ground water resources in the area

The IWULA process is presented in Figure 4 below.

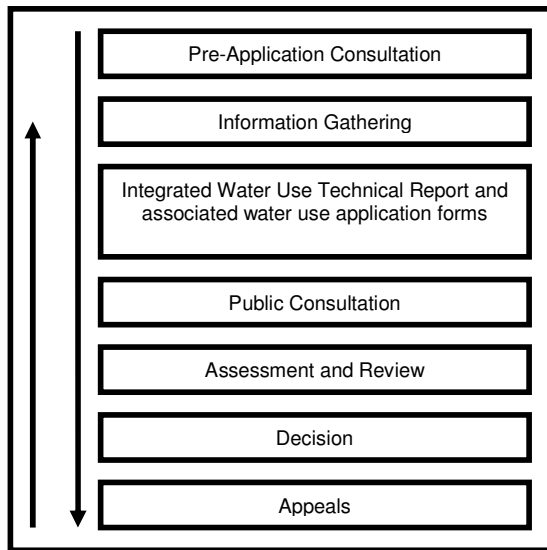


Figure 4: The Water Use License Application Process

PUBLIC PARTICIPATION PROCESS

It is important that relevant I&APs are identified and involved in the public participation process from the outset of the project. To ensure effective public participation, the following steps will be undertaken during the Scoping Phase (refer to Figure 5):

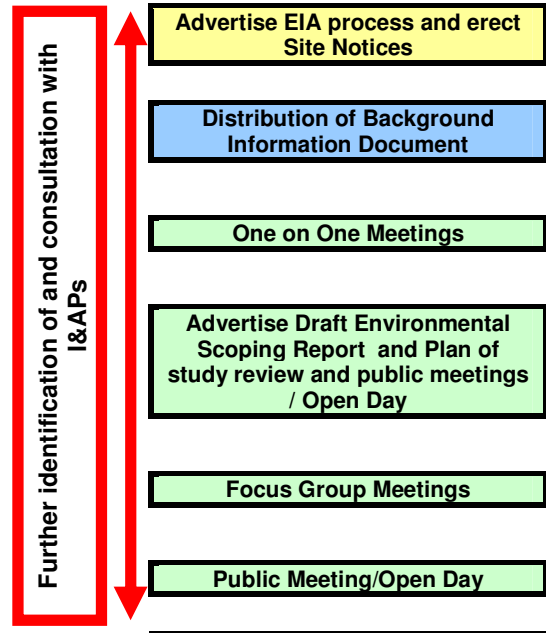


Figure 5: Public Participation Process

STEP 1: Advertise the EIA Process (local press)

STEP 2: Register I&APs and key stakeholders on the database (on-going)

STEP 3: Consultation with, and transfer of information to, I&APs through consultation, public meetings/open day and focus group meetings during the Scoping and EIA phases

STEP 4: Invite I&AP comment and input on the draft Scoping and EIA reports (30-day comment period)

STEP 5: Record all comments, issues and concerns raised by I&APs within an issues trail, which will form an integral part of EIA Reports

HOW CAN YOU GET INVOLVED?

1. By responding (by phone, fax or e-mail) to our invitation for your involvement in the process;
2. By completing the attached comment form and mailing or faxing it to Bohlweki-SSI Environmental;
3. By attending the meetings to be held during the course of the project. Should you register as an I&AP you will be invited to attend these meetings. The meeting dates will also be advertised in local newspapers and registered I&APs will be notified by mail as well;
4. In writing, contacting consultants if you have a query, comment or require further project information; and
5. By reviewing and commenting on the draft Scoping and EIA Reports within the allowed 30-day review periods.

If you consider yourself an I&AP for this proposed project, we urge you to make use of the opportunities created by the public participation process to become involved in the process and provide comment, or raise those issues and concerns which affect and/or interest you, or about which you would like more information. Your input into this process forms a key part of the environmental studies and we would like to hear from you to obtain your views on the proposed project.

By completing and submitting the accompanying response form, you automatically register yourself as an I&AP for this project, and ensure that your comments, concerns or queries raised regarding the project will be noted.

COMMENTS AND QUERIES

Direct all comments, queries or responses to:

Bohlweki - SSI Environmental

Sibongile Hlomuka / Yolisa Zokufa

 PO Box 867 Gallo Manor 2052

 Phone: (011) 798 6001

 Fax: (011) 798 6010

 E-mail: majubaucg@bohlweki.co.za

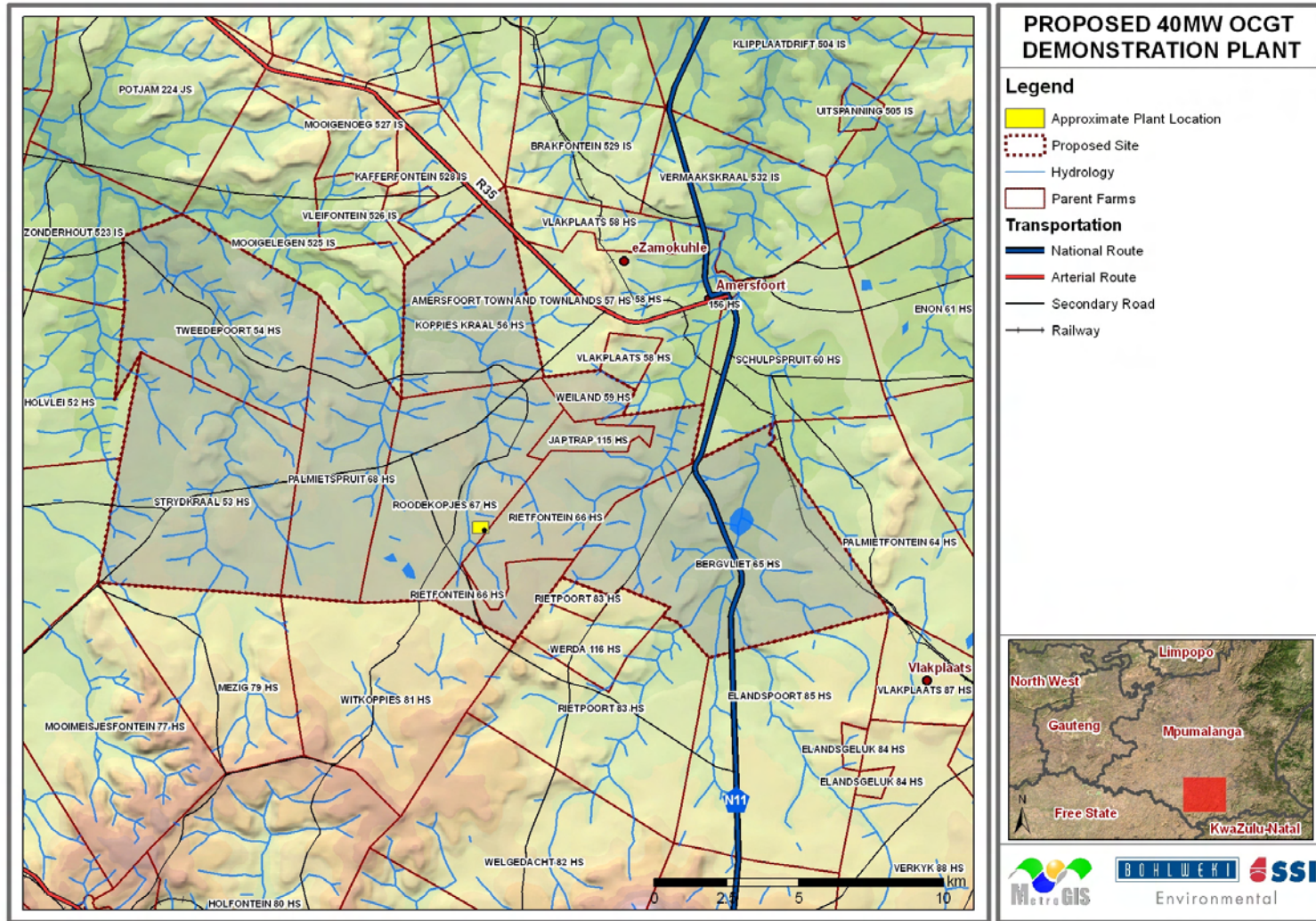


Figure 2: Locality map

ENVIRONMENTAL IMPACT ASSESSMENT PROCESS

**ENVIRONMENTAL IMPACT ASSESSMENT FOR THE CONSTRUCTION OF A 40 MW OPEN CYCLE GAS TURBINE AND
ADDITIONAL INFRASTRUCTURE IN THE AMERSFOORT AREA, MPUMALANGA PROVINCE
PUBLIC PARTICIPATION PROCESS**



REGISTRATION AND COMMENT FORM

Please **complete** in full and return to:

Sibongile Hlomuka / Yolisa Zokufa

PO Box 867, Gallo Manor, 2052

Phone: (011) 798 6001

E-mail: majubaucg@bohlweki.co.za

Fax: (011) 798 6010

TITLE (Prof/Mr/Mrs)		FIRST NAME	
SURNAME			
CAPACITY (Landowner/ Director)			
ORGANISATION (if applicable)			
POSTAL ADDRESS		POSTAL CODE	
TEL: ()		CELL: ()	
FAX: ()		E-MAIL:	

1. What is your main area of interest with regards to the proposed project?

.....

.....

2. Are there any concerns you would like to raise, at this stage, regarding the proposed project?

.....

.....

3. Are there any additional role-players whom we should involve in the process?

YES/NO

If "yes", please provide us with their contact details (Name, address & telephone no):

.....

.....

NAME:	SIGNATURE:
--------------	-------------------

THANK YOU FOR YOUR TIME

OMGEWING IMPAK STUDIE

OMGEWING IMPAK STUDIE VIR DIE KONSTRUKSIE VAN 'N 40 MW OOP-SIKLUS GAS TURBIENE EN ADDISIONELE INFRASTRUKTUUR IN DIE AMERSFOORT AREA, MPUMALANGA PROVINSIE

INLIGTINGS PAMFLET
AUGUSTUS 2009



INLIGTING WAT DIE DOKUMENT BIED

Die dokument beoog om die leser bloot te stel aan die Omgewings Impak Studie (OIS) en Water Gebruiks Lisensie (WGL) vir die konstruksie van 'n 40 MW Oop-Siklus Gas Turbine (OSGT) en die geassosieerde infrastruktuur in die Amersfoort area, Mpumalanga Provinsie.

U as leser word hiermee uitgenooi om deel te neem aan die publieke deelname proses wat deel vorm van die Omgewing Impak Studie. As deelnemende geïnteresseerde en geïmpakteerde persoon sal u meer inligting oor die projek ontvang en 'n geleentheid kry om kommentaar oor die projek te lewer asook die finale uitleg van die projek.

Die rol van die publieke deelname proses is om alle geïnteresseerde en geïmpakteerde partye die geleentheid te bied om aktief deel te neem aan die Omgewings Impak Studie en te verseker dat alle potensiele impakte wat geassosieer word met die projek wel geïdentifiseer word deur die loop van die studie.

Die Omgewings Impak Studie sal gebruik word om die mynbou aansoek vir die Ondergrondse-Steenkool-Gasifisering (OSG) proses te ondersteun. Dit kan genoteer word dat 'n Prospekterings reg vir die mynbou aktiwiteite van die OSG-proses se demonstrasie projek is aan Eskom uitgereik deur die Departement van Minerale en Energie op 24 Februarie 2009 (MP30/5/1/1/2/1144 PR).

PROJEK AGTERGROND

Ondergrondse-Steenkool-Gasifisering (OSG) is die proses waar steenkool omgekeer word in 'n bruikbare gas deur 'n verbrandings proses sonder om die steenkool fisies te myn. 'n Matriks van boorgate word tot en met die steenkool laag gesink waardeur die druk lug en suurstof dan by die gate af gestuur word. 'n Spontane verbrandings proses skakel die steenkool om in 'n sintetiese gas, wat 'n mengsel van CO₂, H₂, CH₄ en CO is. Die gas word dan onttrek vanuit die steenkool laag en gebruik in die Oop-Siklus Gas Turbine vir die opwek van elektrisiteit.

'n Skematiese illustrasie van die Ondergrondse-Steenkool-Gasifisering proses word uitgebeeld in Figuur 1 van die Engelse weergawe van die dokument.

Die klient, Eskom, beplan om die OSG proses in fases te ontwikkel. Die fases is as volg:

- Fase 1A -** Verkenning van die Steenkool Reserwes
- Fase 1B -** Toets die steenkool reserwe se gas kwaliteit en die ontploffings krag.
 - Gas produksie sal begin by 3000 Nm³/h en verhoog na 15 000 Nm³/h. Die eerste gas-brand-flam het gebrand op 20 Januarie 2007 en die eerste elektrisiteit is opgewek op 31 Mei 2007 met 'n 100 kWe motor.
- Fase 2 -** Produksie verhoging en saam-brand (co-fire") toetse
- Fase 3 -** Demonstrasie aanleg vir die Oop-Siklus Gas Turbine

- Konstruksie van die 40 MW OSGT demonstrasie aanleg om die volhoubaarheid an die OSG-proses te bepaal. All elektrisiteit wat opgewek word deur die 40 MW OSGT sal gebruik word by die OSG aanleg en oorblywende elektrisiteit sal in die nasionale energie netwerk geplaas word – **Huidiglik in die fase.**

WAT IS 'N OOP-SIKLUS GAS TURBIENE AANLEG EN HOE WERK DIT?

'n Oop-Siklus Gas Turbine Krag Stasie word opgemaak deur 'n verbrandings kamer, 'n kompressor, 'n gas turbine en 'n kragopwekker. 'n As verbind die kompressor met die verbrandings kamer. Die proses is eenvoudig en atmosferiese lug word in die kompressor ingesuiig waar dit onder baie hoe druk geplaas word en daarna na die verbrandings kamer vervoer word.

Gas wat ontrek word uit die OSG-proses word dan saam met die hoe druk lug in die verbrandings kamer gepomp en vorm dan 'n ontploffings mengsel. Die mengsel word dan verplaas na die gas turbine by 'n temperatuur van 1 300°C.

Energie wat opgewek word in die turbine word dan verplaas na die krag opwekker en die kompressor. Die OSGT stel ook uitlaatgasse vry aan die atmosfeer.

Die 40 MW OSGT demonstrasie aanleg sal ongeveer 20 hektaar opneem en word saamgestel deur die volgende komponente:

- Gas Turbine
- Kragopwekkers
- Brandstof tenks nodig om die krag stasie aan te sluit
- "Transformeerders"
- Hoe spannings Erf 88 kV
- Skoorsteen

Addisionele infrastruktuur sluit die volgende in:

- OSG myn aanleg wat boorgate en pyplyne insluit
- Gas pyplyne vir opvang en vervoer van gas
- Water suiwerings aanleg
- 88 kV transmissie lyn
- 'Bystand afkoelings sisteem
- Toegangs paaie
- Beheer kamer
- Ablusie fasiliteite
- 'n Verdampings dam
- Aflewering en ontvangs areas vir chemikaliee, oplossings en by-produk tenke

Die studie area word uit gebeeld in Figuur 2, van die Engelese weergawe van die dokument.

WAT IS DIE POTENSIELE OMGEWINGS IMPAK WAT GEASSOSIEER WORD MET DIE PROJEK?

Potensiele impakte wat geïdentifiseer is sal bestudeer word deur verskeie spesialis studies. The volgende spesialis studies sal deel vorm van die Omgewings Impak Studie:

SPECIALIS VELD	SPECIALIS OF ORGANISASIE
Grond en Landbou Potensiaal	Dr Johan van der Waals – Terra Soil Science
Sosio-ekonomiese Studie	Nonka Byker and Raoul de Villiers – MasterQ Research
Erfenis Studie	Dr Johnny van Schalkwyk (Private)
Biodiversiteit	Riaan Robbeson – Bathusi Environmental Consulting
Vleilande	Paul da Cruz – SiVEST Environmental
Lug Kwaliteit	Dr Raylene Watson – Bohlweki-SSI Environmental
Visuele Studie	Dawie van Vuuren - MetroGIS
Onafhanklike hersiening van die geologiese studie	Peet Meyer
Onafhanklike hersiening van die geo-hidrologiese studie	Reinhardt Meyer
Onafhanklike hersiening van opervlak water studie	Chris Waygood - Jones and Wagner

As deel van die Omgewings Bestek Opname (OBO), sal spesialis studies gekombineer met n besoek aan die projek area omgewings impakte identifiseer wat verder ondersoek en bestudeer gaan word in die Omgewings Impak Studie. Geïntreseeerde en geïmpakte persone se deelname sal ook in die OIS proses geïnkorporeer word. Die OBO sal ook areas wat vermy moet word bestudeer en alternatiewe plasinge voorstel. Die Bestek Opname sal ook die voorkeur area vir die oprigting van die OSGT aanwys wat verder bestudeer sal word in die OIS

Die OIS beoog om die volgende bereik:

- Om n oorkoepelende assessering van die sosiale en biofisiese omgewing van die projek area te gee;
- Om n deeglike ondersoek van die voorkeur areas in terme van omgewings kriteria, wat n rangering van die grootste impakte insluit, te gee;
- Om mitigerende maatreels vir die grootste impakte te verskaf; en
- Om n deeglike publieke deelname proses te verseker wat seker sal maak dat almal se kommentaar genoteer sal word en dat daar terugvoering op dit sal wees

HOEKOM IS OMGEWINGS STUDIES NODIG?

In terme van die Omgewings Impak Regulasies soos gepubliseer in die regering kennisgewings R.385 tot R.387 word daar aangedring dat Eskom aansoek doen vir omgewings goedkeuring vir die aktiwiteite soos gespesifiseer in die Regulasies. Die Regulasies was in terme van afdeling 24(5) – lees saam met afdeling 44 van die Nasionale Omgewingsbestuurswet, 1998 (Wet No 107 van 1998) gepubliseer waarin die omgewings impak studie proses uiteen gesit is asook alle aktiwiteite wat omgewings goedkeuring sal verlang voordat die aktiwiteit sal kan plaasvind.

Die OIS is n effektiewe beplanning en besluitnemings middel wat die potensiele omgewings gevolge van n voorstelde projek gedurende die beplanning proses identifiseer.

Eskom het Bohlweki-SSI Environmental aangestel as onafhanklike omgewings konsultant om die omgewings studies te doen en om die potensiele omgewings impakte wat geassosieer word met die projek te identifiseer. Die studies sal n 2 fase proses volg:

- Fase 1 – Omgewings Bestek Opname (OBO)
- Fase 2 – Omgewings Impak Studie (OIS) en Omgewings Bestuur Plan (OBP)

'n Skematiese illustrasie van die OIS proses word uitgebeeld in Figuur 3 van die Engelse weergawe van die dokument.

GEINTEGREERDE WATER GEBRUIKS LISENSIE

In terme van afdeling 21 van die Nasionale Water Wet, 1998 (Wet No 36 van 1998) [NWW] word water gebruike geïdentifiseer waarvoor die water gebruike sekere goedkeuring moet ontvang, soos uiteengesit in afdeling 40 van die NWW, voordat die water gebruik mag plaasvind.

Om die OSGT aanleg en die OSG proses te bedryf word verskeie water gebruike geaktifiseer en sal Eskom dus aansoek moet doen vir 'n Geïntegreerde Water Gebruiks Lisensie voordat die aktiwiteite kan plaasvind.

Die goedkeuring van die water gebruike en die uitryking van 'n geïntegreerde water gebruik lisensie, sal deur die Departement van Waterwese, voorheen bekend as Departement van Waterwese en Bosbou gedoen word.

Water gebruike wat geassosieer word met die projek is die volgende:

- Ontrekking van water;
- Verhitting van water deur gas afkoeling;
- Stoor van water in ondergrondse kompartemente;
- Behandeling van water;
- Konstruksie van paaie en pyplyne wat water kanale sal kruis; en
- Die potensiele impak van grondwater.

HOE KAN JY BETROKKE RAAK?

1. Deur te reageer op die uitnodiging via e-pos, foon of faks, kan u betrokke raak;
2. Deur die aangehegte vorm te voltooi en te stuur aan Bohlweki-SSI Environmental
3. Deur vergaderings by te woon wat gehou gaan word. As jy registreer as 'n I&AP sal jy 'n outomatiese uitnodiging na die vergaderings ontvang. Die datums van die vergadering sal ook in die koerant advertensie verskyn.
4. Deur geskrewe kommentaar of vrae aan die konsultant te stuur
5. Deur kommentaar te lewer op die voorlopige Bestek Opname Verslag en Omgewings Impak Studie in die gegewe 30 dae kommentaar periode.

As jy jouself as 'n geïntereerde of geïmpakteerde persoon sien, moedig Bohlweki-SSI Environmental jou aan om van die geleentheid gebruik te maak wat deur die publieke deelname proses geskep word en dus betrokke te raak by die proses en kommentaar te lewer op enige aspek van die projek wat jou kan affekteer. Jou inset in die projek speel 'n sleutel rol en dus sal ons graag van u wil hoor.

Deur die aangegegte forms in te vul en te stuur aan Bohlweki-SSI Environmental, sal u outomaties registreer as 'n geïntereerde of geïmpakteerde persoon vir die projek en so verseker dat u kommentaar en belange genoteer sal word.

VRAE EN KOMMENTAAR

Adresseer alle kommentaar, vrae en insette na: Bohlweki - SSI Environmental
Sibongile Hlomuka / Yolisa Zokufa
✉ Posbus 867 Gallo Manor 2052
☎ Foon: (011) 798 6001
📠 Faks (011) 798 6010
✉ Epos: majubaucg@bohlweki.co.za

UHLELO LOKUCWANINGWA KWESIMO SEMVELO

KUHLONGOZWA UCWANINGO LWEZEMVELO OLUYINGXENYE LWESICELO SOKWAKHIWA KWESIZINDA SIKAGESI ESINESISINDO ESINGU 40MW KANYE NEZAKHIWO EZIHAMBISANA NASO (CONSTRUCTION OF A 40MW ELECTRICAL OPE GASED TURBINE AND ADDITIONAL INFRASTRUCTURE)E-AMERSFOORT, ESIFUNDAZWENI SASEMPUMALANGA

INCWAJANA YOLWAZI
AUGUST 2009



IKUTSHELANI LENCWAJANA

Lencwajana iqonde ukukuchathazela ngolwazi njengomunye wabantu abanentshisakalo noma abathintekayo (Interested and Affected Parties) ngaloluhlelo oluhlongozwa ngabakwa-Eskom Holdings Limited. Abakwa-Eskom bahlongoza ukwakhiwa kwesizinda sikagesi esingu 40MW esaziwa ngokuthi yiOpen cycle gas turbine. Bafuna nokufaka isicelo selayisensi (imvume) yokusetshenziswa kwamanzi (Integrated Water Use Licence Application (IWULA) mayelana nohlelo oluhlongozwayo endaweni yase-Amersfoort esifundazweni saseMpumalanga. Lencwajana ibuye ikutshelwe ngocwaningo olwenziwayo ngesimo semvelo. Lencwajana ibuye ikwazise ukuthi ungazibandakanya kanjani kuloluhlelo ukuze ukwazi ukothola imininingwane mayelana nohlelo, bese uveza imibono yakho kanye nokungagculiseki kwakho ngaloluhlelo. Ukuchathazela ngolwazi kuyisisekelo sokuzibandakanya nomphakathi futhi kukunikeza ithuba lokudlala indima ebalulekile ekuqaleni kohlelo. Ukuzibandakanya komphakathi kusiza kakhulu ekucaciselweni ngolwazi nasekuxazululweni kwezinkinga lezi ezingadalwa yiloluhlelo lokucwaningwa kwesimo semvelo.

SILUDINGELANI LOLUHLELO

U-Eskom Holdings Limited uhlose ukwakha i40MW ukukhombisa ukuthi ugesi ungakhiqizeka kusetshenziswa amaturbines ngohlelo lokushiswa kwamalahla angaphansi komhlaba ukuze abeyigesi (Underground Coal Gasification – UCG) Ucwangingo lwezemvelo luzosetshenziswa ukusekela isicelo samalungelo okumbiwa ohlelweni lwe-UCG. Okwamanje lusebenza ngaphansi kwemvume yomnyango wezokumbiwa namandla yango 24 February 2009 (MP 30/5/1/1/2/1144 PR). IWULA yiyona ezovumela ukusetshenziswa kwamanzi mayelana nohlelo lwe-UCG kanye ne 40MW yesizinda sikagesi.

I-UCG uhlelo lapho amalahlwe ezoshiswa khona kuzogujwa imigodi efinyelele phansi emalahleni. Lamalahle ayabaswa bese kufakwa umoya kuthelwe namanzi kuleyo migodi. Umlilo usetshenziselwa ukumba amalahlwe nokukhiqiza isyngas (kuxuba I CO₂, H₂, CH₄ ne CO) engasetshenziswa ngqo njengamafutha koshimela.

Isithombe esibonisa uhlelo lwe UCG uzosibona kwincwajana yesilungu ekhuluma nge UCG. Abakwa Eskom basungula uhlelo lwe –UCG ngezigaba ezilandelayo.

- **Isigaba 1a** – Ukuhlolwa kwamalahle akhona
- **Isigaba 1b** – Ukuvivinywa kohlelo ngokuqikelela uhlobo lwegesi ezotholakala uma amalahlwe eseshisiwe. Igesi izoqala ngokuba ichithwe yonke indawo (flared) bese iyashiswa eMajuba Power Station kumabhoyila
- **Isigaba 2** – Kuzokhushulwa umkhqizo kuvivinywe nokushisa
- **Isigaba 3-** Kuzokwakhiwa isiteshi se 40MW se Open Cycle Gas lapho kuzohlolwa khona uhlelo lwe-UCG ukuze kubonwe ukuthi ugesi uyakhiqizeka ngokusetshenziswa kwamashimela (turbines) - Okwamanje **sikulesigaba saloluhlelo.**

IYINI I OCGT FUTHI ISEBENZA KANJANI

I-Open Cycle Gas turbine (OCGT) yisizinda samandla esihlanganisa indawo yokushisa i-compressor, i-gas turbine kanye ne-generator. I-compressor kanye ne-gas turbine ziboshelwe kushaft eyodwa. I-compressor idonsa umoya iphinde ikhuphule indlela ecindezela ngayo umoya ngaphambi kokuba iyidlulisele endaweni yokushisa (combustion chamber).

Endaweni yokushisa imibaso (fuel) ihlanganiswa nomoya ocindezelwe kuphume igesi eshisayo ingene kunamaturbines kufanele ibesezingeni elingaphezulu kuka 1300°C. Logesi oshisayo ukhiphela amandla awo nge-turbine ku compressor kanye naku-generator. Insalela bese iphumiselwa ku-atmosfiya.

Ubukhulu besendlalela se-40MW OCGT bungacishe bube ngu 20ha okuhlanganisa okulandelayo:

- Gas turbine
- Isizinda segenerator
- Indawo yokugcina imibaso
- Generating transformers
- HV yard (88 kV)
- Ishimela

Inggqalasizinda izohlanganisa nalokhu okulandelayo

- Uhlelo lokumbiwa lwe-UCG (imigodi namaphayiphi)
- Gas treatment plant (Indawo yokuhlanza igesi)
- Ukuqoqwa kwegas kanye namaphayiphi okuyithutha
- Water treatment plant (Indawo yokuhlanza amanzi)
- Uhlelo lokupholisa (cooling towers)
- Imigwaqo yokungena
- Centralised control room (igumbi elibonelela ukuphatha)
- Ablution facilities (izindlu zangasese)
- Idamu lomhwamuko
- Izindawo zokuthwala nokwehlisa okusuke kuphethwe emathangeni amakhemikhali.

KUNGANI KUDINGEKA UCWANINGO LWESIMO SEZEMVELO?

Lesaziso sikhishwa ngaphansi komthetho kahulumeni unombolo R385 kuya ku R387 ka 2006 phansi kwesigaba 24(5) esifundwa nesigaba u-44 sohlelo lokunakekelwa kwemvelo olwagunyazwa ngomthetho kaHulumeni wokunakekelwa kwemvelo kazwelonke (National Environmental Management Act) umthetho 107 wangonyaka ka 1998 ukuthi u Eskom Holdings Limited udinga imvume emnyangweni we Department of Water and Environmental Affaire (DW&EA) osuwaziwa njengomnyango wezamanzi nezemvelo ukuthi bakhone ukuqhubeka naloluhlelo oluhlongozwayo

Kubalulwe izindlela ezimbalwa uhlelo oluhlongozwayo olungathinta ngayo ezemvelo. Ngokwengxenywe yocwaningo lwezemvelo, ukuthinteka kwemvelo kubonelelwa ngokusetshenziswa kwocwepheshe abalandelayo:

IZIFUNDO ZEZEMVELO	INHLANGANO
Inhlabathi nezolimo (Soil & Agricultural)	Dr Johan van der Waals-Terra Soil Science
Micro-economic impact assessment and review of Social labour plan (ukubuyekwezwa kohlelo lwezemisebenzi kanye nokuthikazemeka kwezomnotho)	Anita Bron- MasterQ Research
Ezamasiko namagugu Esizwe (Heritage)	Dr Johnny van Schalkwyk
Biodiversity (Ucwaningo lwezitshalo)	Riaan Robbeson-Bathusi Environmental Consulting
Wetlands (Amaxhaphozi)	Paul da Cruz – SiVEST Environmental
Izifundo ngesimo sezomoya (Air Quality)	Dr Raylene Watson – Bohlweki-SSI Environmental
Peer Review of Geological Study (Ucwaningo ngesimo somhlabathi)	Peet Meyer

Peer Review of Geohydrological Study (Ucwaningo ngamanzi angaphansi komhlabathi)	Reinhardt Meyer
Peer Review of Surface Water Study (Ucwaningo ngamanzi aphezu komhlaba, isib. Imifula)	Jones andWagner

IMVUME YOKUSETSHENZISWA KWAMANZI

Loluhlelo oluhlongozwayo nendawo okuzokwakhiwa kuyo kuzolwandelwa umthetho nemigomo yokusetshenziswa kwamanzi u Section 40 we National Water Act wango 1998 (Act No 36 of 1998) ugunyaza ukuthi kufanele kutholakale imvume yokusetshenziswa kwamanzi kumnyango wezamanzi nezemvelo.

Ilayisensi egunyaza ukusetshenziswa kwamanzi eUCG izogunyaza loku

- Ukudonswa kwamanzi angenamakhemikhali
- Ukufudunyezwa kwamanzi kuzoba yingxenywe yokupholisa igasi
- Amanzi azogcinwa ngaphansi komhlaba kwimigede
- Ukuhlanzwa kwamanzi asebenzile
- Ukwakhiwa kwemiqwaqo namaphayiphi amanzi azohamba phakathi kwemifudlana endaweni.
- Okungase kuphazamise amanzi angaphansi komhlaba endaweni eqokiwe.

UHLELO LOKUBANDAKANYWA KOMPHAKATHI

Uhlelo lokubandakanywa komphakathi luzokwenziwa ngezigaba, ukuze kuqinisekise ukubandakanyeka kwabanenshisakalo kanye nabathintekayo kuloluhlelo:

- Isigaba Sokuqala: Ukukhishwa kwesimemezelo ephaphandabeni lendawo.
- Isigaba Sesibili: Ukubhaliswa kwabanentshisakalo noma kwabathintekayo kanye nabazobamba iqhaza elibalulekile kuloluhlelo.
- Isigaba Sesithathu: Ukuxhumana kanye nokuchathazelana ngolwazi nabo bonke abanentshisakalo noma abathintekayo kuloluhlelo ngokubathumelela incwajana yolwazi kanye nendlela yokubanjwa kwemihlangano eyahlukene.
- Isigaba Sesine: Ukubhalwa kombiko kokuphawuliwe kanye nemibono yabanentshisakalo noma abathintekayo kuloluhlelo, loku kuyoba yingxenywe yombiko wezocwaningo.
- Isigaba Sesihlanu: Abantu abanentshisakalo kanye nabathintekayo bazonikwa amalanga angu –30 ukuba baphawule ngalombiko ozobe ukhishiwe.

Abantu abanentshisakalo kanye nabathintekayo bayakhuthazwa ukuthi baphawule kulombiko ozokhishwa, ukuze konke okudingwa wucwaningo kuhlolwe kusanekhathi.

UNGAZIBANDAKANYA KANJANI?

U-Eskom uqoke iqembu labacwaningi besimo semvelo abazimele abaziwa ngokuthiwa I-Bohlweki-SSI Environmental njengababonisi abazimele ukuqhuba uhlelo lokuvikelwa kweMvelo nokuxhumana nomphakathi mayelana nohlelo oluhlongozwayo.

Uma ngabe uzibona njengomunye wabathintekayo noma onentshisakalo ngaloluhlelo futhi uthanda ukuzibandakanya naloluhlelo uyacelwa ukuthi usebenzise lelihuba lokuzibandakanya komphakathi ukuze ukwazi ukuveza imibono yakho kanye nokungaculiseki ngokuhanjiswa kwaloluhlelo.

Ngokugcwalisa bese uthumela lelifomu, uyobe njalo usuzibhalisile njengomunye wabathanda ukuthunyelwa ulwazi maqondana naloluhlelo. Uma udinga ukuzibhalisa ohlelweni lokuzibandakanya komphakathi, nikezela ngemininingwana yakho ku:

<p>e- Bohlweki –SSI Environmental Sibongile Hlomuka / Yolisa Zokufa</p> <p>✉ P O Box 867 Gallo Manor, 2052</p> <p>☎ Tel: (011) 798 6001</p> <p>☎ Fax: (011) 798 6010</p> <p>✉ E-mail: majubaucg@bohlweki.co.za</p>
